

THE UNIVERSITY OF TEXAS AT DALLAS



PRODUCED BY THE GREEN
INITIATIVE COMMITTEE OF
STUDENT GOVERNMENT

3 INTRODUCTION

**4 INTERSECTIONAL
ENVIRONMENTALISM**

**5 SUSTAINABLE
DEVELOPMENT GOALS**

10 FACTS AND TIPS

13 SUSTAINABILITY AT UTD

**28 SUSTAINABLE
BUSINESSES**

29 GET INVOLVED

30 SOURCES

32 ACKNOWLEDGMENTS

Introduction

The University of Texas at Dallas is committed to advancing our campus through economic, environmental, and social sustainability.

This guide was produced with the goal of increasing campus-wide knowledge of sustainable practices.

The goal of this should be to inform students about the changes UTD has made and will continue to make towards a cleaner campus.

In a recent survey conducted by Student Government, 86% of students said that they would like to see UTD move in a more sustainable direction.

Intersectional Environmentalism

SUSTAINABILITY



The intricacies of the overlap between environmental justice and social justice cannot fully be discussed in one sustainability guide. However, we hope to highlight a few points to explain this intersectionality and encourage readers to do their own research and work to be anti-racist and an ally for BIPOC.

Waste, pollution, air quality, and the climate crisis disproportionately affect Black, Indigenous, and communities of color (Environmental Racism: deliberate acts, disproportionately targeting communities based on race)

70% of the country's contaminated waste sites, or superfund sites, are located near low-income housing

47% of people who live critically close to hazardous chemical facilities are Black or Latino

Black people are exposed to 50% more air pollution than white people

Communities with more POC are 40% more likely to have unlawfully unsafe drinking water

What we can do:

- Read up on intersectionality and examine the privileges in our own lives
- Surround ourselves with diverse voices so that we can understand and hear the experiences of others
- Be quick to listen, and approach people with compassion if they live differently to us
- Continue to make individual choices, but also look at how we can get involved in collective action and lobbying for better environmental policy
- Understand that the more privilege we hold in society, the more power we have to make it better
- Be open and willing to have conversations, even if they make you uncomfortable sometimes



SUSTAINABLE DEVELOPMENT GOALS

1 NO
POVERTY



End poverty in all its forms everywhere.

Economic growth must be inclusive to provide sustainable jobs and promote equality.

2 ZERO
HUNGER



The food and agriculture sector offers key solutions for development and is central for hunger and poverty eradication.

3 GOOD HEALTH
AND WELL-BEING



Ensuring healthy lives and promoting the well-being for all at all ages is essential to sustainable development.

4 QUALITY
EDUCATION



Obtaining a quality education is the foundation to improving people's lives and sustainable development.

5 GENDER
EQUALITY



Achieve gender equality and empower all women and girls.

Gender equality is not only a fundamental human right, but a necessary foundation for a peaceful, prosperous, and sustainable world.

6 CLEAN WATER
AND SANITATION



Ensure access to water and sanitation for all.

Clean, accessible water for all is an essential part of the world we want to live in.

**7 AFFORDABLE AND
CLEAN ENERGY**



Ensure access to affordable, reliable, sustainable, and modern energy.

Energy is central to nearly every major challenge and opportunity.

**8 DECENT WORK AND
ECONOMIC GROWTH**



Promote inclusive and sustainable economic growth, employment, and decent work for all.

Sustainable economic growth will require societies to create the conditions that allow people to have quality jobs.

**9 INDUSTRY, INNOVATION
AND INFRASTRUCTURE**



Build resilient infrastructure, promote sustainable industrialization, and foster innovation.

Investments in infrastructure are crucial to achieving sustainable development.

**10 REDUCED
INEQUALITIES**



Reduce inequality within and among countries.

To reduce inequalities, policies should be universal in principle, paying attention to the needs of disadvantaged and marginalized populations.

11 SUSTAINABLE CITIES AND COMMUNITIES



Make cities inclusive, safe, resilient, and sustainable.

There needs to be a future in which cities provide opportunities for all, with access to basic services, energy, housing, transportation and more.

12 RESPONSIBLE CONSUMPTION AND PRODUCTION



Ensure sustainable consumption and production patterns.

13 CLIMATE ACTION



Climate change is a global challenge that affects everyone, everywhere.

Take urgent action to combat climate change and its impacts.

14 LIFE BELOW WATER



Conserve and sustainably use the oceans, seas, and marine resources.

Careful management of this essential global resource is a key feature of a sustainable future.

15 LIFE ON LAND



Sustainably manage forests, combat desertification, halt and reverse land degradation, and halt biodiversity loss.

16 PEACE, JUSTICE AND STRONG INSTITUTIONS



Promote just, peaceful, and inclusive societies.

Access to justice for all, and building effective, accountable institutions at all levels.

17 PARTNERSHIPS FOR THE GOALS



Revitalize the global partnership for sustainable development.

The Sustainable Development Goals are the blueprint to achieve a better and more sustainable future for all. They address the global challenges we face, including poverty, inequality, climate change, environmental degradation, peace, and justice.

The Office of Sustainability utilizes United Nations Sustainable Development Goals (SDGs) to connect students' education to transdisciplinary application in order to create a more sustainable world.

Sustainability Facts and Tips



25% of the bottled water you buy is really municipal tap water.



The average college student produces 640 pounds of solid waste each year, including 500 disposable cups and 320 pounds of paper.

On average, one supermarket goes through 60 million paper bags per year!



Transportation and housing make up about 60% of the carbon footprint of US households. This is due to the fuels used for transportation and to heat, cool, and power our homes.

A modern glass bottle takes 4000 years or more to decompose.



Sustainability Facts and Tips

Water

- Utilizing a dishwasher uses less water than washing dishes by hand.
- Wash dark clothes in cold water - hot water is no better for cleaning clothes. Cold water is much more energy-efficient than hot and warm settings. Plus it'll help preserve the color.
- Make sure you have a full load when washing dishes or clothes.
- Keep a container or bucket in the shower to collect any running water. While you're waiting for the water to heat up, the bucket will collect the rest and you can use it to water your plants or mop the floors.
- Notice if your shower head is releasing too much water. Invest in a shower head with water sensing technology to help reduce the flow of water.
- Cutting your shower time by 2-5 minutes can save thousands of gallons of water per year.

Food and Kitchen

- Buy food without plastic wrap. If possible, use aluminum because it is recyclable.
- Buy food in bulk and when in-season.
- When purchasing produce, don't look for the most perfect one, look for one that is acceptable and others probably won't buy. i.e. buy single bananas vs. bunches.
- Emissions could be reduced by as much as 70% by adopting a vegan diet and 63% by adopting a vegetarian diet. Try reducing daily meat consumption.
- Purchase reusable cleaning towels rather than paper towels.
- Buy coffee beans in bulk, use reusable bulk bags, invest in a refillable K-cup, and try using a French press to make your coffee.
- Try to switch to plant-based milk.

Sustainability Facts and Tips

Technology

- Unplug electronics when they are not in use.
- Plant Trees while you search with [Ecosia](#) - it is free!
- Try to use rechargeable batteries.
- Try finding refurbished or second-hand technology items.
- You can easily save energy in the winter by setting the thermostat to 68°F while you're awake and setting it lower while you're asleep or away from home.
- In the summer, you can keep your house warmer than normal when you are away. Set the thermostat to 78°F only when you are at home and need cooling. Set your thermostat at as high a temperature as comfortably possible and ensure humidity control if needed. The smaller the difference between the indoor and outdoor temperatures, the lower your overall cooling bill will be.

Sustainable Habits

- Say "no" to bags when you go shopping. A plastic bag is used for an average of 12 minutes but will remain in the environment for 1,000 years before it decomposes. Instead, bring your own bag.
- Make sure to recycle glass - it is infinitely recyclable.
- Close your blinds when the sun is heavy to prevent heat transfer.



Sustainability at UT Dallas

The University of Texas at Dallas is dedicated to integrating sustainability into everything we do, including working to ensure a sustainable, rewarding campus environment. As the University grows, UT Dallas places a strong priority on sustainability as we aim to graduate well-rounded citizens whose education has prepared them for rewarding and productive careers in a constantly changing world. To learn more about UTD's operational stewardship see the [Office of Sustainability website](#).

1. Reducing Waste

Minimize your environmental impact and see how to reduce your waste and carbon footprint.

2. Campus Garden

The UT Dallas Community Garden program provides Comets the opportunity to garden and serve the local community.

3. Comet Cupboard

See how our campus fights food insecurity and how you can help.

4. Transportation

There are many options for transportation here at UT Dallas. See how you can reduce your carbon footprint by participating in public transit, biking, or walking.

5. Get Involved

Learn about the many different ways to participate on campus.

Know your impact to reduce climate change.



Reducing Waste

1.Reduce

Avoid single-use plastics or items. Switch to reusables and make smart purchases.

2.Reuse

Try to reuse items that are still good or take them to a store or center for pre-owned things.

3.Compost

The Comet Composting Initiative makes composting available to students that live in UV and Canyon Creek Apartments. Click [here](#) to learn more.

4.Regift

Before throwing something away that you no longer need, think about re-gifting or donating it to someone.

5.Recycle

Learn more about recycling on the following pages.



Be Eco-friendly
Be Responsible

Recycling

Why is recycling important?

Recycling allows us to divert certain forms of waste that would usually end up in a landfill.

The items we recycle could end up being recycled into new products that we purchase.

According to the EPA, the US recycling rate was at 35.4% in 2017. This number can be improved through our action.

Through making an active effort to recycle properly, we can reduce our waste footprint.

UT Dallas has a variety of specialty recycling programs in place, allowing members of the campus community to maximize our impact.

How do I recycle correctly?



In a perfect world, we would be able to recycle all of the materials that we consume. Unfortunately, this is simply not a reality. Recycling processes are refined to only recycle certain materials properly, and the demand for such recycled products is limited. For that reason, it's essential that the items we are recycling are recyclable.

"Wishcycling" is the process of placing items in single-stream recycling streams without checking to see if they're actually recyclable. When a non-recyclable item enters the single stream recycling stream, it can contaminate all of the actually recyclable items, creating huge amounts of waste.

Determining whether an item is recyclable can vary state to state, city to city, and campus to campus. This Recycling Guide provides information for The University of Texas at Dallas. Recycling in the local area, such as Richardson and Dallas, may look different, so be sure to check!

Recycling

What is single-stream recycling?

Single-stream recycling describes an inclusive process in which multiple types of recyclables can be collected through a single system. This creates a streamlined process for consumers while also reducing collection costs. Recyclables are then sorted and processed in order to be used in recyclable manufacturing.



The materials that can and can't be recycled through single-stream recycling programs vary from location to location. It's essential that you double-check what single-stream recycling looks like for your particular area! **At UT Dallas**, you can recycle cardboard, paper and magazines, plastics 1-5 & 7, and rinsed metal cans through our single-stream recycling system. Some common mistakes in recycling include placing styrofoam, unrinsed items, and plastic bags into the single-stream recycling bins.

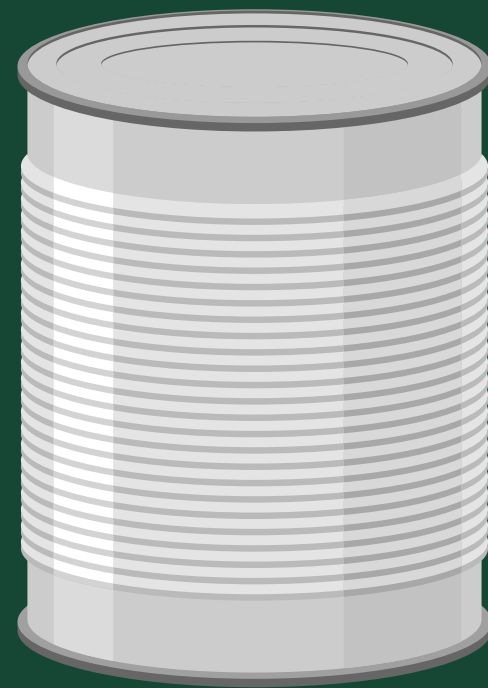
Common items to Recycle



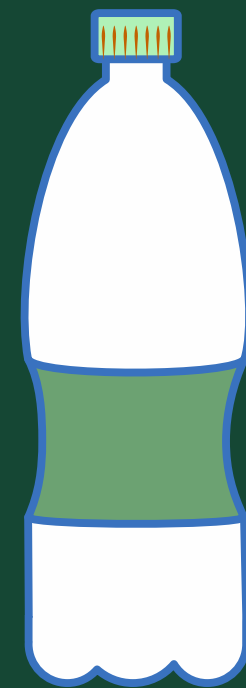
Aluminum Cans
(Rinsed)



Glass Bottles



Metal Cans
(Rinsed)



Plastic Water Bottles



Cardboard



Paper

Do Not Recycle The Following



Light Bulbs



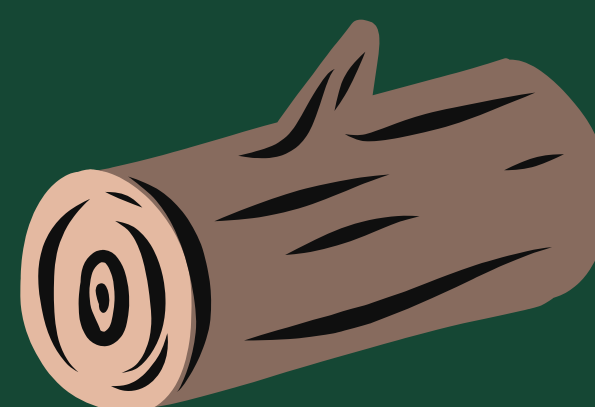
Styrofoam Egg Containers



Food Waste or Food tainted Items



Styrofoam Containers



Wood

Recycling

SPECIALTY RECYCLING PROGRAMS

Plastic Bags & Plastic Wrap

Cardboard

Disposable Masks

Batteries

Clothing & Shoes

Electronics

Metal

Nitrile Gloves

Printer Cartridges and Toner

Used Binders

Confidential Paper Shredding

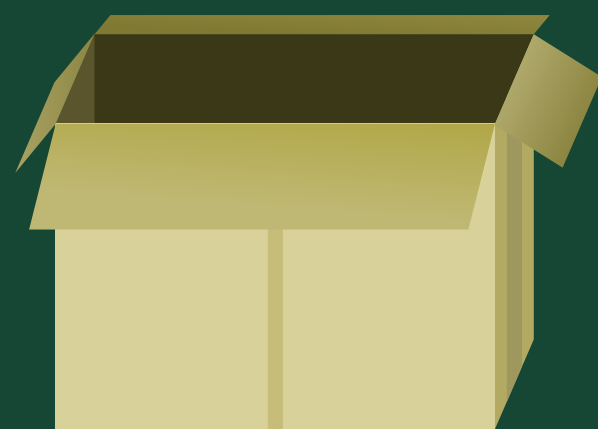
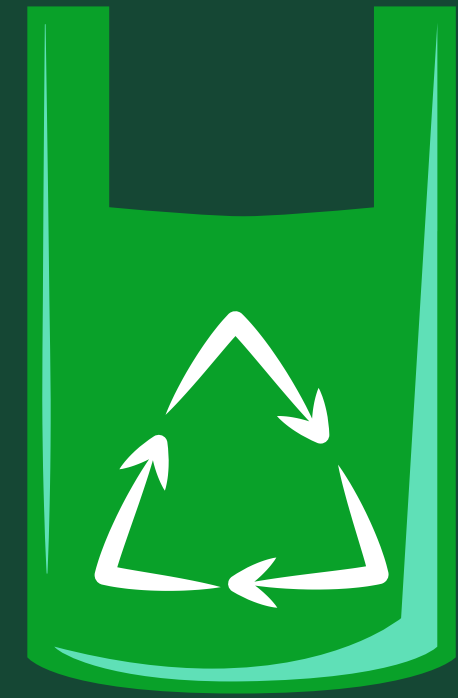
Recycling

PLASTIC BAGS & PLASTIC WRAP

SPECIALTY RECYCLING PROGRAM

If your plastic can stretch, it can be recycled! Through our partnership with Trex, plastic film, plastic bags, shipping wrap, and bubble wrap can all be recycled. You can find locations for plastic wrap through our Recycling Locator.

Plastic bags can be incredibly harmful and disruptive if accidentally recycled into single-stream recycling. Machines can get easily clogged by this plastic film, disrupting the sorting process. Using our campus specialty recycling stream for plastic bags rather than just placing them in recycling bins is essential to ensuring productive recycling.



CARDBOARD

SINGLE STREAM OR SPECIAL PICKUP

Most of the time, your cardboard can simply be recycled in a regular single-stream recycling bin.

However, if you have a large amount of cardboard that needs to be recycled, you can coordinate a special cardboard pickup! Simply email recycling@utdallas.edu.

For example, Move-In is a time where we organize a special cardboard recycling pickup. Doing this separately in large quantities allows us to keep recycling as efficient as possible.

DISPOSABLE MASKS

SPECIALTY RECYCLING PROGRAM

As we continue to wear masks in public to prevent the spread of COVID-19, it's essential to realize the waste they can produce when not properly disposed of. Wear a reusable mask whenever possible, and be sure to clean it between wears to promote proper sanitation.

However, when you do have disposable masks you need to recycle, UTD sustainability has got you covered. through a new initiative introduced by our Eco Reps. Keep your eye out for one of these decorated collection boxes on campus and place your disposable masks there to recycle them!



Recycling

BATTERIES

SPECIALTY RECYCLING PROGRAM

Thanks to a collaboration with the Office of Research Compliance, we have 70 on-campus locations to recycle batteries, which can be found through our Recycling Locator.

Recycling batteries has two benefits for the environment. First, it keeps heavy metals from polluting landfills. Second, plastic and metal that is recovered from recycled batteries can be used to make new batteries.



CLOTHING & SHOES

SPECIALTY RECYCLING PROGRAM



Before circulating your items through a conventional recycling method, consider passing down your clothing and shoes to a friend in need or dropping them off at a local thrift store. Ensuring that we make the most out of the clothing and shoes we purchase is essential in deterring waste from landfills in the future.

However, UT Dallas also provides a clothing & shoes recycling option.

You can recycle Clothing & Shoes by dropping them off into the blue bins shown at the left. Recycled materials are collected through our partner, the World Wear Project.

The World Wear Project makes used clothing items affordable for people in need, while also promoting environmental and social responsibility.



REDUCE THE AMOUNT OF THESE ITEMS YOU BUY, REUSE THEM TO THE FULLEST EXTENT YOU CAN, AND THEN CONSIDER A RECYCLING OPTION!

Recycling

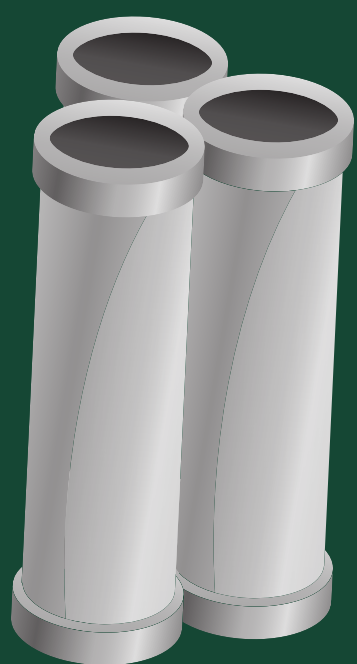
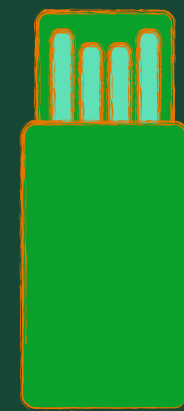
ELECTRONICS

SPECIALTY RECYCLING PROGRAM

When you are done using them, electronics can be one of the most difficult items to figure out your recycling options for. Not to worry, UTD has a variety of programs in place!

Keep an eye out for e-waste recycling events hosted throughout the year. They are hosted through a collaboration of the Office of Sustainability, Office of Student Volunteerism, and the UTD Tech Store.

For hard drives specifically, the Office of Information Security has a program in place, and you can contact them for more information. Through this program, small data storage devices are shredded and recycled free of charge for you.



METAL

SINGLE STREAM OR SPECIAL PICKUP

Small quantities of metal can be placed in the single-stream recycling bin. For larger quantities of metal with no hazardous material, you can contact recycling@utdallas.edu to arrange a pickup.

Metal can actually be recycled indefinitely without altering its properties. Because of its versatility, it is essential that we make use of metal recycling infrastructure to prevent waste.

NITRILE GLOVES

OPT-IN PROGRAM

Facilities Management at UTD is proud to not only encourage the transition from latex to nitrile gloves on campus but to also offer a recycling stream for nitrile gloves. This is achieved through a partnership with Kimberley-Clark. Kimberley-Clark processes collected PPE into plastic pellets, which can then be used for new consumer products.

If you are interested in joining this nitrile gloves program, contact us at sustainability@utdallas.edu!



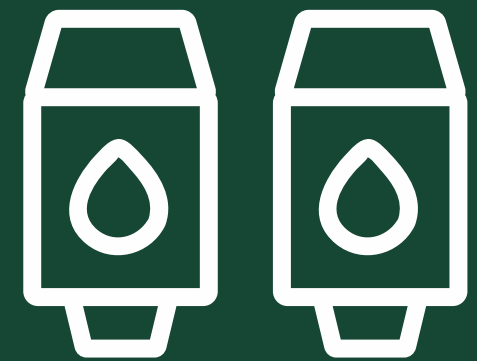
Recycling

PRINTER CARTRIDGES & TONER

SPECIALTY RECYCLING PROGRAM

Every year, more than half of the printer cartridges used in the United States end up in a landfill. However, ink cartridges are both refillable and recyclable. They can all be refilled two or three times.

Through our partnership with Staff Council, we distribute cartridge recycling bins to mail and printing bins across campus. If you would like a bin, or your bin needs to be emptied, contact recycling@utdallas.edu.



CONFIDENTIAL PAPER SHREDDING

SINGLE STREAM OR SPECIAL PICKUP

Although paper can be recycled through the single-stream recycling process on campus, there may be instances where confidential disposal is needed. A secured shred service is available and operated by Facilities Management to properly dispose of any state records approved by Records Management.

Contact shredding@utdallas.edu for more information in participating in this secure recycling service.

USED BINDERS

SPECIALTY RECYCLING PROGRAM

At the end of academic years, used school supplies can often create huge amounts of waste in landfills. However, there may be someone who can make use out of your used items. If you have a used binder that is in good shape, contact our office at recycling@utdallas.edu to schedule a pick-up or drop-off time. Through our partnership with the Richardson Independent School District, these binders will go to students pursuing higher education who are in need.



Specialty Recycling Locator

How-To Guide

Navigate to

<https://www.utdallas.edu/sustainability/operations/recyclinglocations/>

OPTION 1: FILTER BY ITEM

Specialty Recycling Locator

Find recycling locations for:

- ✓ Batteries - 69 locations
- Clothing and Shoes - 2 locations
- Disposable Masks - 8 locations
- Glass Bottles - 5 locations
- Plastic Film Recycling - 13 locations
- Printer Cartridges - 31 locations

Find

1) Under the

"Find recycling locations for" tab, select the item you are searching for.

2) Click "**Find**" and all on-campus recycling locations will appear. You can visit one of the places to dispose of your item.

OPTION 2: FILTER BY LOCATION

Find recycling locations in:

- ✓ Activity Center (AB) - 1 type / location
- Administration (AD) - 8 types / locations
- Bioengineering Science Building (BSB) - 11 types / locations
- Callier Center Richardson (CR) - 1 type / location
- Callier Center Richardson Addition (CRA) - 2 types / locations
- Cecil and Ida Green Center (GC) - 2 types / locations
- Cecil H. Green Hall (GR) - 3 types / locations
- Davidson-Gundy Alumni Center (DGA) - 2 types / locations
- Dining Hall West (DHW) - 1 type / location
- Edith O'Donnell Arts and Technology Building (ATC) - 4 types / locations
- Engineering and Computer Science North (ECSN) - 4 types / locations
- Engineering and Computer Science South (ECSO) - 6 types / locations
- Engineering and Computer Science West (ECSW) - 2 types / locations
- Erik Jonsson Academic Center (JO) - 2 types / locations
- Eugene McDermott Library (MC) - 3 types / locations
- Facilities Management (FM) - 6 types / locations
- Founders Building (FO) - 3 types / locations
- Founders North (FN) - 3 types / locations
- Founders West Annex (FA) - 1 type / location
- Karl Hoblitzelle Hall (HH) - 1 type / location
- Lloyd V. Berkner Hall (BE) - 5 types / locations
- Modular Lab 1 (ML1) - 1 type / location

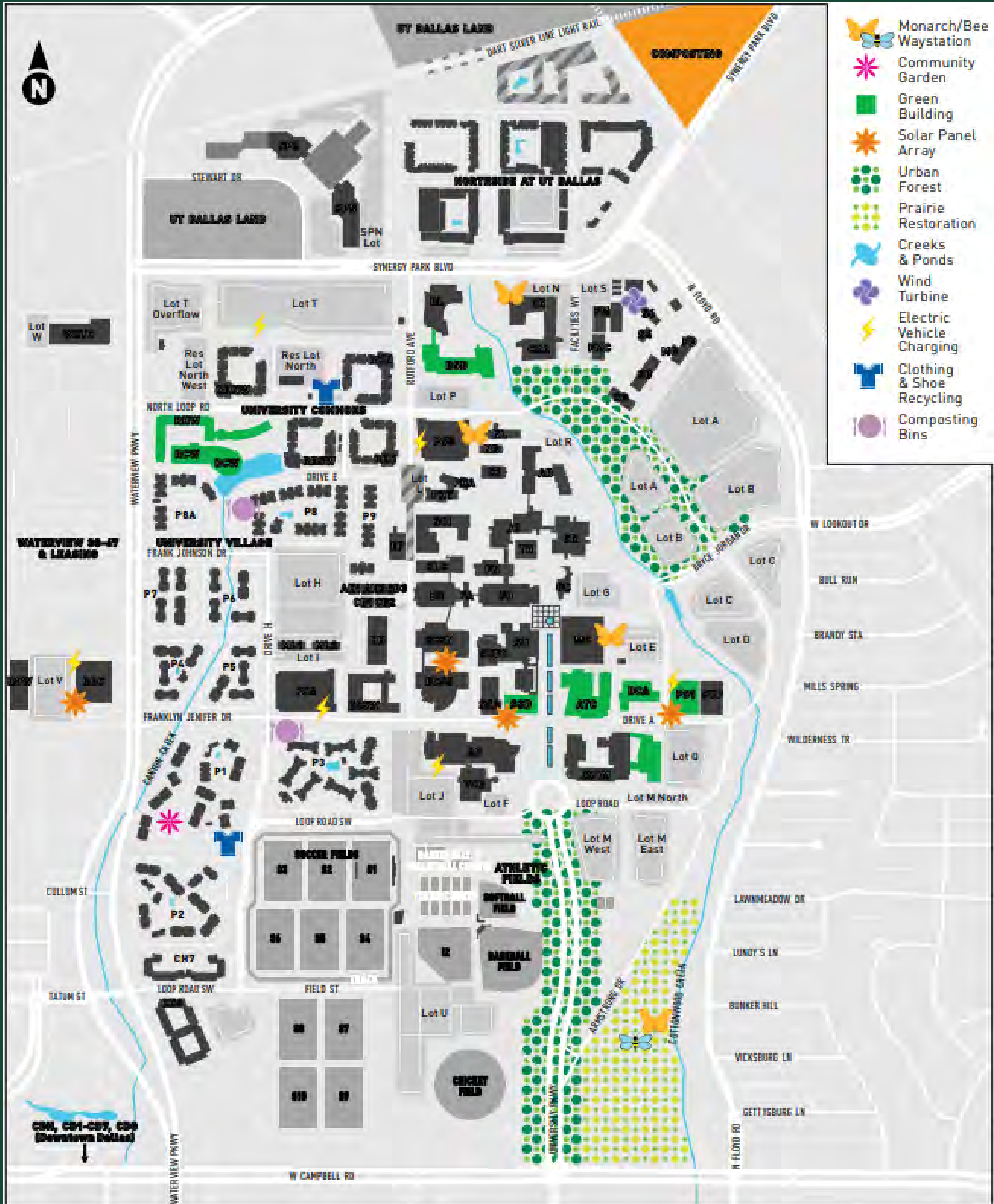
Find

1) Under the

"Find recycling locations in" tab, select a campus building or location.

2) Click "**Find**" and all specialty recycling streams that have a disposal site in that location will appear. Take your sustainability one step further and make just one trip to that location to dispose of your items!

Our Green Campus Map



Campus Garden

The UT Dallas Community Garden program provides Comets with the opportunity to enjoy the benefits of natural gardening and community greening. The mission is to promote a sense of community through the shared interest and participation in cultivating a garden. Click [here](#) to learn more.



Where is it?

The UT Dallas Community Garden is located in the southwest corner of the Phase I apartment complex.

Directions: Turn onto Franklyn Jenifer Drive from Waterview Parkway and take a right into the Phase 1 apartment complex parking lot. Continue south to the UT Dallas Community Garden.

How to Participate

Open to students, faculty, staff

- Gardeners of all levels are welcome
- Garden Helpers attend monthly garden workdays on Saturday mornings and work alongside registered plot holders to tend to the community spaces and complete general garden tasks (mulching, weeding, etc.). After attending at least two workdays within an academic year, Garden Helpers may add their name to the waiting list to adopt a plot. Each Garden Helper must attend a Garden Orientation.
- Individual plots become available to interested Garden Helpers when current Plot Holders graduate or decide to transition out of the program. Upon approval, each new gardener may tend to a ½ plot, free of charge and assignments are on a first-come, first-served basis. Those who are interested in tending to a plot must be available to attend the Saturday Garden Workdays.



What is grown?

Many plants are grown to donate and be eaten by gardeners:

- Bell pepper, hot peppers
- Green beans, sugar snap peas
- Lettuce, kale, cabbage
- Potatoes
- Onion
- Tomatoes



Comet Cupboard

The Comet Cupboard is a UT Dallas food pantry initiative dedicated to helping students in need. Its primary mission is to provide necessary food and personal care items to members of the UT Dallas community.



" The Comet Cupboard is located in MC 1.604, in the basement of the McDermott Library.

Access the website [here](#).

Contact cupboard@utdallas.edu to learn how to donate items, or donate online [now](#).

Students currently enrolled at UT Dallas may use the Comet Cupboard twice per week.

Monday, Wednesday, Friday: 10:00am - 4:00pm

Tuesday and Thursday: 11:30am - 5:30pm

The Comet Cupboard currently accepts donations of non-perishable food and personal care items only. A list of commonly needed items is available [here](#).

All currently enrolled UT Dallas undergraduate students are eligible and encouraged to volunteer, although there are a limited number of volunteer spots available.

Transportation

All of our internal combustion engines that are powering cars, trucks, buses, boats and planes add up to about 15% of global greenhouse gas emissions. Check out the different transportation options that UTD provides. Taking public transportation, biking, or walking reduces these emissions.

Comet Cruiser

A neighborhood bus service for UT Dallas and surrounding communities.

Bicycles, mobility devices, and service animals are allowed.

See the route [here](#).

Bicycles on Campus

UTD has been awarded a Bronze Certification as a Bicycle Friendly University. Numerous bike mounts are available on campus and are ready to use by students.

Comet Cab - Campus Shuttle

"You can wave down a Comet Cab at any safe point along its route and be dropped off at any safe point on its circuit. Each route has its own hours of operation."

See the route [here](#).

For more information, contact transit@utdallas.edu /972.883.7777.

Zip Car - car sharing service

Zip Car is a "self-service, on-demand car sharing to campus. The University's Zipcar fleet includes a variety of vehicles. Reserved parking spots for these vehicles are available at several locations." See [here](#) for how it works.

DART - Dallas Area Rapid Transit

"Gets you around Dallas and 12 surrounding cities with modern public transit services and customer facilities tailored to make your trip fast, comfortable, and economical."

A pass is needed to ride. Campus has passes for students faculty and staff.



DON'T FORGET THAT WALKING IS A FREE AND HEALTHY WAY TO TRAVEL WHILE ALSO REDUCING WASTE.

Sustainable Businesses

Look out for these certifications



Certified B Corporations are a new kind of business that balances purpose and profit. They are legally required to consider the impact of their decisions on their workers, customers, suppliers, community, and the environment. This is a community of leaders, driving a global movement of people using business as a force for good.

Organic is a labeling term found on products that have been produced using cultural, biological, and mechanical practices that support the cycling of on-farm resources, promote ecological balance, and conserve biodiversity.



This logo is a registered trademark for products that do not contain animal products or by-products and that have not been tested on animals.

When you see a product with the Fair Trade Certified seal, you can be sure it meets rigorous social, environmental, and economic standards. That means: safe working conditions, environmental protection, sustainable livelihoods, and Community Development Funds.



FSC certification ensures that products come from responsibly managed forests that provide environmental, social and economic benefits.

The seal means that the certified product or ingredient was produced using methods that support the three pillars of sustainability: social, economic, and environmental. Independent, third-party auditors—critical to the integrity of any certification program—evaluate farmers against requirements in all three areas before awarding or renewing certification.



Get Involved



Office of Sustainability

[@utd_sustainability](#)



Eco Reps

[@utd_ecoreps](#)
[The Greenhouse Blog](#)



Newsletter

Subscribe [OoS newsletter](#) for content about sustainability and events happening around campus



Sustainability Service

Honors

The OoS at UT Dallas honors students with Sustainability Service Honors who complete service honors that contribute to the advancement of the United Nations Sustainable Development Goals. The definition of service is far-reaching, including attending sustainability-related events and completing community service projects. Be sure to register on our website and document your hours to achieve this honor. More information [here](#).



Green Fund

Apply for Green Initiative's Green Fund for any sustainability-related projects you'd like to start on campus!



ECO UTD

Environmental Conservation Organization - an open forum for students to create sustainable initiatives on campus and in the broader community [@ecoutd](#)

Sources

1. <https://gimletmedia.com/shows/howtosaveaplanet/xjh53gn/is-your-carbon-footprint-bs>
2. <https://climate.nasa.gov/effects/>
3. <https://sustainability.georgetown.edu/50-facts-for-50-years/>
4. <https://www.consumerreports.org/washing-machines/dont-bother-using-hot-water-to-wash-your-laundry/>
5. <https://www.smithsonianmag.com/smart-news/case-washing-clothes-cold-water-180955459/>
6. <https://www.shelbizlee.com/post/55-ways-to-conserve-water-in-your-every-day-life>
7. <https://www.clarku.edu/offices/campus-sustainability/sustainable-clark/recycling-and-composting/fun-recycling-facts/>
8. <https://www.energy.gov/energysaver/thermostats#:~:text=Thermostat%20Operation&text=You%20can%20easily%20save%20energy,asleep%20or%20away%20from%20home.&text=Avoid%20setting%20your%20thermostat%20at,turn%20on%20your%20air%20conditioner.>
9. https://sustainability.utdallas.edu/download/Sustainability_Report_2020.pdf
10. <https://brightly.eco/ethical-labels-to-look-for/>
11. <https://bcorporation.net/>
12. <https://www.usda.gov/media/blog/2016/07/22/understanding-usda-organic-label>
13. <https://vegan.org/>
14. <https://www.fairtradecertified.org/>
15. <https://us.fsc.org/en-us>
16. <https://www.rainforest-alliance.org/>
17. <https://www.imperfectfoods.com/>
18. <https://www.seventhgeneration.com/home>
19. <https://www.tillamook.com/>
20. <https://hivebrands.com/>
21. <https://www.etsy.com/>
22. <https://www.amys.com/>
23. <https://www.change.org/>
24. <https://earthhero.com/>
25. <https://cora.life/>

Sources

26. <https://miyokos.com/>
27. <https://tofurky.com/>
28. <https://www.toms.com/>
29. <https://www.allbirds.com/>
30. <https://athleta.gap.com/>
31. <https://www.benjerry.com/>
32. <https://www.vitacoco.com/>
33. <https://www.girlfriend.com/>
34. <https://yourparade.com/>
35. <https://armarketinghouse.com/your-sustainable-black-indigenous-and-poc-owned-supply-chain/>
37. <https://queerbrownvegan.com/what-is-environmental-racism/>
38. <https://thesteppingstoneenv.com/spotlight/isaias-hernandez>
39. <https://rodaleinstitute.org/blog/19-bipoc-farmers-environmentalists-to-follow-on-instagram/>
40. <https://www.kulturamag.com/article/kamea-chayne>

Acknowledgments

We want to acknowledge the contributions of the people who worked tirelessly on the pages within. Below are those committed to this project:

Akshar Patel
Allyson DeVerse
Anastasia Whittemore
Sonya Swami
Marshall Mao
Paulina Hruskoci
Caroline Lonneman
Gary Cocke
Caitlin Griffith

We thank you for your continued support in our efforts to contribute to living more sustainably.

Green Initiative

Standing Committee of
Student Government



Student Government Office
Student Union 2nd Floor, SU 2.401
Monday-Friday, 8:30am - 5:00pm
972-883-2284
sg@utdallas.edu

