

# TxSAW 2015 – Penetration Testing Lab

Friday 6<sup>th</sup>, 2015

## Pre-requisites

Laptop with RAM: 4GB (8GB preferred), Disk: 20GB available, Reasonably powerful x86 hardware. Any recent Intel or AMD processor should do, OS: any supported by VirtualBox

[https://www.virtualbox.org/wiki/End-user\\_documentation](https://www.virtualbox.org/wiki/End-user_documentation)

## Instructions for Lab environment preparation

### A. Windows, Linux, or OS X

1. Download and Install VirtualBox (or the hypervisor of your choice):

<https://www.virtualbox.org/wiki/Downloads>

(follow the link corresponding to your OS under “VirtualBox platform packages”)

### B. Download and install Kali:

1. Download the ISO (it’s a large file):

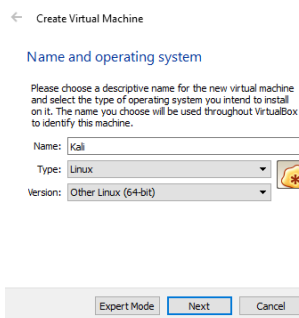
<http://cdimage.kali.org/kali-2.0/kali-linux-2.0-amd64.iso>

2. Create a VM on VirtualBox:

[https://docs.oracle.com/cd/E26217\\_01/E26796/html/qs-create-vm.html](https://docs.oracle.com/cd/E26217_01/E26796/html/qs-create-vm.html)

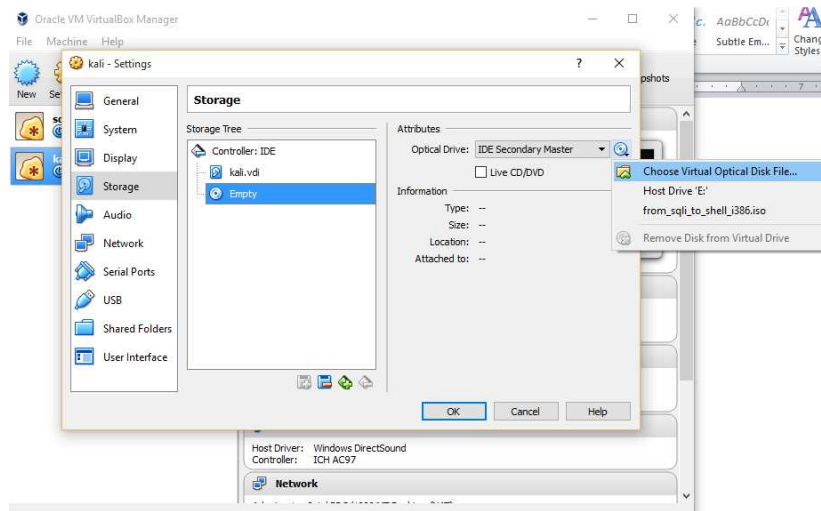
Select Type: Linux and Version: Other Linux (64-bit)

Example:



3. Before starting the VM, click on settings → storage → click on empty → select kali ISO on your computer

Example:



4. Start the VM and follow these instructions to install Kali:

<http://docs.kali.org/installation/kali-linux-hard-disk-install>

### C. Download the following lab ISOs to your computer

(just download and store them in a safe place on your computer; about 200MB total):

1. <https://ptl.io/cve-2014-6271.iso>

2. [https://ptl.io/from\\_sqli\\_to\\_shell\\_i386.iso](https://ptl.io/from_sqli_to_shell_i386.iso)